

TRANSAUTOPHAGY

European Network for Multidisciplinary Research on Autophagy

Quarterly Newsletter - Autumn 2018 -

<http://cost-transautophagy.eu/>



Words from the Management Committee

- Workshop on Autophagy in model organisms organized by Gabor Juhasz (HU) & Fulvio Reggiori (NL) 6-8 September 2018, Budapest - Thank you to all participants:



- Congratulations to two young group leaders, Lisa Frankel (DK) and Suayib Üstün (DE), for the opening of their new laboratory:



◀ **Lisa Frankel**, Danish Cancer Society Research Center, Copenhagen
“RNA and Autophagy”

Suayib Üstün, Eberhard Karls University, Tübingen ▶
“Proteolytic degradation pathways and their role in plant immunity”



- Follow us on [Twitter](#) and [LinkedIn](#)



Upcoming Autophagy Meetings/Workshops

COST TRANSAUTOPHAGY members as guest speakers or organizers:

- *Spanish Autophagy Meeting, SEFAGIA*. Nov 14-16, 2018. Madrid, Spain
- *Keystone Symposia. Autophagy: From Model Systems to Therapeutic Opportunities*. Feb 17-21st, 2019. Santa Fe, USA
- *AIM Center Annual Meeting & Symposium*. Feb 22nd, 2019. Albuquerque, USA
- *Age-related human diseases. Special focus: Autophagy*. Sept 25-27, 2019. Tübingen, Germany



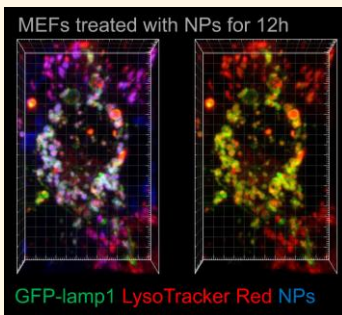
Nature Cell Biology, Volume 20 Issue 9, September 2018 – **Focusing on Women in Science**
Testimony from **Anne Simonsen**, Professor at the Institute of Basic Medical Sciences of the University of Oslo, NO. “Confidence to go the way science takes you”. [Read more](#)



Publications/Videos

Collaborative Research Articles from COST TRANSAUTOPHAGY members in (Jan-Sept 2018):

- *Chloroquine inhibits autophagic flux by decreasing autophagosome-lysosome fusion.* Autophagy
- *Atg9 establishes Atg2-dependent contact sites between the endoplasmic reticulum and phagophores.* JCB
- *From oxidative stress damage to pathways, networks, and autophagy via microRNAs.* Oxid Med Cell Longev
- *Host autophagy machinery is diverted to the pathogen interface to mediate focal defense responses against the Irish potato famine pathogen.* eLIFE
- *Molecular characterization of autophagic and apoptotic signaling induced by sorafenib in liver cancer cells.* J Cell Physiol
- *Bacteria exploit autophagy for proteasome degradation and enhanced virulence in plants.* Plant Cell



- *Lysosome-dependent cell death and deregulated autophagy induced by amine-modified polystyrene nanoparticles.* Open Biology

◀ Images of mouse embryonic fibroblasts that have been treated with nanoparticles (NPs). GFP-lamp1 (displayed in green), LysoTracker Red and nanoparticles in blue.

Image provided by Fengjuan Wang, Kenneth Dawson and Patricia Boya.

Other reviews from COST TRANSAUTOPHAGY members in Summer 2018:

- *Driving next-generation autophagy researchers towards translation (DRIVE), an international PhD training program on autophagy.* Autophagy
- *Autophagy, Inflammation, and Metabolism (AIM) Center of Biomedical Research Excellence: supporting the next generation of autophagy researchers and fostering international collaborations.* Autophagy
- *Genetic aberrations in macroautophagy genes leading to diseases.* BBA Molecular Cell Research



PhD/Postdoc/Job opportunities

- Francis Crick Institute, S. Tooze Laboratory, London, UK
Postdoc : *Role of membrane lipids in the formation and maturation of autophagosomes*
Postdoc : *Molecular requirements for the formation of autophagosomes*
Contact: sharon.tooze@crick.ac.uk
- Danish Cancer Society Research Center, L. Frankel Laboratory, Copenhagen, DK
Postdoc: *RNA and autophagy*; PhD student: *RNA and autophagy*. Contact: lisa.frankel@bric.ku.dk
- Eberhard Karls University, T. Proikas-Cezanne Laboratory, Tübingen, DE
Postdoc: *Lysosomal phosphoinositide signaling*; Contact: tassula.proikas-cezanne@uni-tuebingen.de.
- Swedish University of Agricultural Sciences, A. Minina Laboratory, Uppsala, SE
PhD student: *Time-resolving the dynamics of plant autophagy molecular machinery*; Contact: Alena.Minina@slu.se.